

AutoPrep Pre-Treatment Wipes

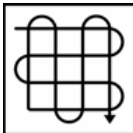
FOR PROFESSIONAL USE ONLY

Description

Chromium Free conversion coating packaged in Ready to Use / Pre-saturated Wipes.
AutoPrep Pre-Treatment Wipes produce a conversion coating forming chemical bonds with metal surfaces enhancing adhesion and corrosion resistance of applied paints and paint systems.



Double wipe application



Vertical and then immediately with a horizontal stroke motion.
Complete wetting with fluid for 1 minute is necessary.



Allow to dry at ambient air temperature
Accelerate the drying with low velocity, clean warm air.



Recoatable with all AkzoNobel Vehicle Refinishes 2K fillers except:

Sikkens Autosurfacers Rapid
All polyester products
Sikkens Spot primer/s
Lesonal 1K Primer Filler RTS

*Note: Autosurfacers UV can be applied on AutoPrep pre-Treatment Wipes

Akzo Nobel Car Refinishes recommends wearing the appropriate PPE, goggles, rubber gloves and protective clothing.

Read complete TDS for detailed product information

AutoPrep Pre-Treatment Wipes

FOR PROFESSIONAL USE ONLY

Description

Chromium Free conversion coating packaged in Ready to Use / Pre-saturated Wipes.
AutoPrep Pre-Treatment Wipes produce a conversion coating forming chemical bonds with metal surfaces enhancing adhesion and corrosion resistance of applied paints and paint systems.

Suitable substrates

Steel
Zinc-coated steel

Aluminium
Stainless steel

Products and additives

AutoPrep Pre-Treatment Wipes

Surface preparation



Remove contamination using appropriate surface cleaner.



Steel: dry sand with P120

Galvanized steel: sand with P180 and abrade with Scotch Brite type A

Aluminum: dry sand with P180 and abrade with Scotch Brite type A

Stainless steel: dry sand with P180 and abrade with Scotch Brite type A

Note: In case non sanding filler will be applied: final sanding step P220 – P320



Remove contamination using appropriate surface cleaner.

Application



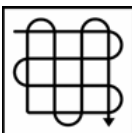
Remove AutoPrep Pre-Treatment Wipes from sealed lidded dispenser.

To avoid drying out of the wipes, please make sure the lid is tightly closed on the container immediately after dispensing.



Hand apply the pre-treatment solution by way of a tight 50- 75% overlap motion.

Personal protection: wear goggles, rubber gloves and protective clothing.

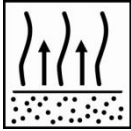


Apply a double wipe application: a vertical motion immediately followed by a horizontal motion.

AutoPrep Pre-Treatment Wipes

FOR PROFESSIONAL USE ONLY

Application (continued)



The surface will stay wet for at least one minute. This is necessary to allow the solution to react with the base metal.

Bare substrate color change indicates proper application once drying periods have been completed.

To avoid drying of the wipe in use, store in a closed plastic bag or container. In this case the wipe can be used for 12 hours.

Used wipes cannot be put back in the original container.

Drying time



Recoat after 15 minutes and within 4 hours at 70°F (20°C).

Recoatable with



Recoatable with all AkzoNobel Vehicle Refinishes 2K fillers except:

Sikkens Autosurfacers Rapid

All polyester products

Sikkens Spot primer

Lesonal 1K Primer Filler RTS

*Note: Autosurfacers UV can be applied over AutoPrep Pre-Treatment Wipes

Theoretical coverage

One pre-saturated towel can be used for approx. 1 m².

Product storage

Store products unopened, and used products with closed lids preferably between 9°C-40°C

Avoid too much temperature fluctuation, optimal storage temperature approximately 20°C

Protect from freezing. If frozen, there will be irreversibly damaged and should not be used.

Keep container vertical. If exposed to extended storage duration, rotate container vertically.

Wipes that are dried out completely cannot be used.

Shelflife: Unopened container: 2 years at 20°C
Opened container: 1 year at 20°C

Explanation batch number:

12046A

First two digits: year of production (2012)

Next three digits: production day (day 46)

Letter: for internal use at production location

AutoPrep Pre-Treatment Wipes

FOR PROFESSIONAL USE ONLY

Akzo Nobel Coatings LTD
Address: Unit 2B, Didcot Park
Churchward, Southmead Industrial Estate
Didcot, Oxfordshire, OX11 7HB
Tel: +44 (0)1235 862226

FOR PROFESSIONAL USE ONLY

IMPORTANT NOTE The information in this data sheet is not intended to be exhaustive and is based on the present state of our knowledge and on current laws: any person using the product for any purpose other than that specifically recommended in the technical data sheet without first obtaining written confirmation from us as to the suitability of the product for the intended purpose does so at his own risk. It is always the responsibility of the user to take all necessary steps to fulfill the demands set out in the local rules and legislation. Always read the Material Data Sheet and the Technical Data Sheet for this product if available. All advice we give or any statement made about the product by us (whether in this data sheet or otherwise) is correct to the best of our knowledge but we have no control over the quality or the condition of the substrate or the many factors affecting the use and application of the product. Therefore, unless we specifically agree in writing otherwise, we do not accept any liability whatsoever for the performance of the product or for any loss or damage arising out of the use of the product. All products supplied and technical advices given are subject to our standard terms and conditions of sale. You should request a copy of this document and review it carefully. The information contained in this data sheet is subject to modification from time to time in the light of experience and our policy of continuous development. It is the user's responsibility to verify that this data sheet is current prior to using the product.

Coatings brand names mentioned in this data sheet are trademarks of or are licensed to AkzoNobel.

Head Office

AkzoNobel Car Refinishes B.V., PO Box 3 2170 BA Sassenheim, The Netherlands. www.sikkenscr.com